

Kat. 8.1 - System



- Werkzeuglos
- integrierte Saubschutzklappe
- 1 Modul = AWG26/7 - AWG22/1
- 25G 50m
- 40G 30m
- GHMT Type Approval
- Made in EU
- Komplette rückwärtskompatibel

Patchkabel



Patchkabel, Kat. 8.1, geschirmt, VPE: 1
CP18ADADAxxxx

xxxx = Länge in dm

Panel



0,5 HE gerade
CKVPL5F0EE

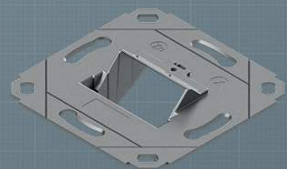


1 HE gerade
CKVPL0101E



1 HE Winkelabgang
CKVPL0W01E

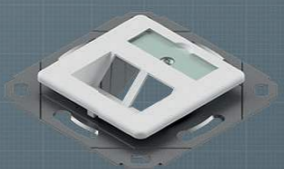
Designfähige Modulträger



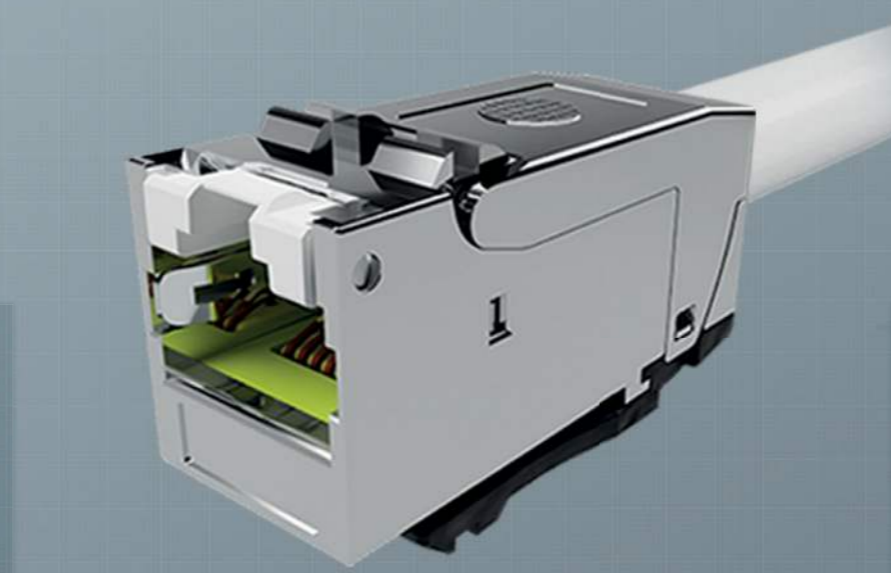
1/2-fach ohne Zentralplatte
CKVD1DS



1-fach mit Zentralplatte
CKVD1D2

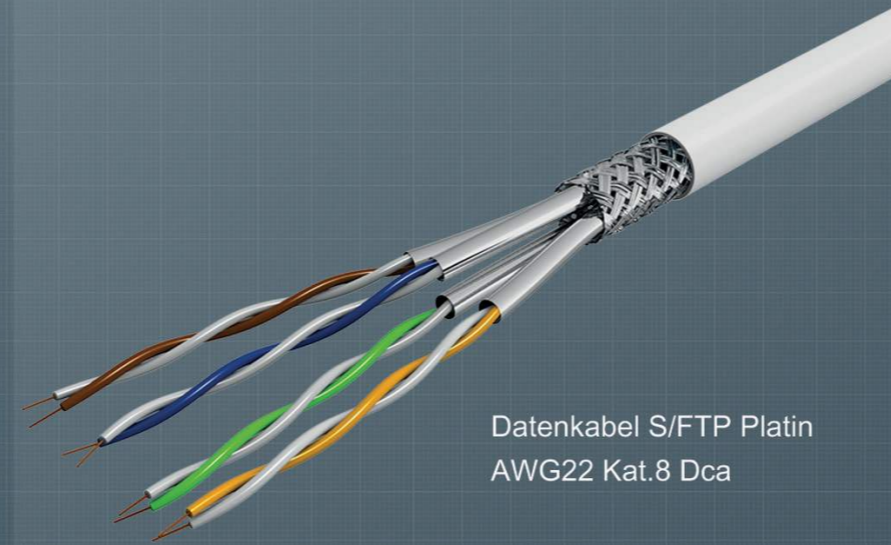


2-fach mit Zentralplatte
CKVD1D1



fixLink® Pro + Keystone Kat.8.1 ISO/IEC
CKFAK002P+ (AWG 26-22)

Datenkabel

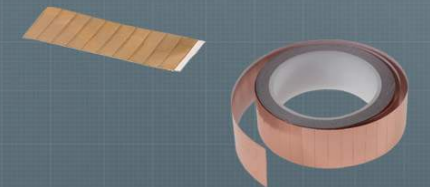


Datenkabel S/FTP Platin
AWG22 Kat.8 Dca

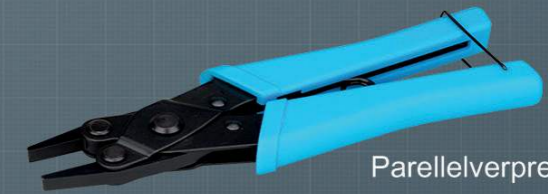
Zubehör



Abmantelwerkzeug
CZABIBL



Kupferband
CZCUBT20



Parallelverpresszange
CKZW2003

