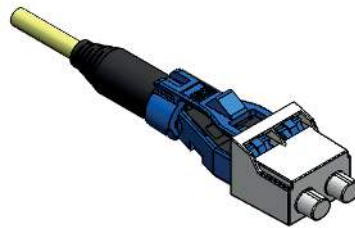
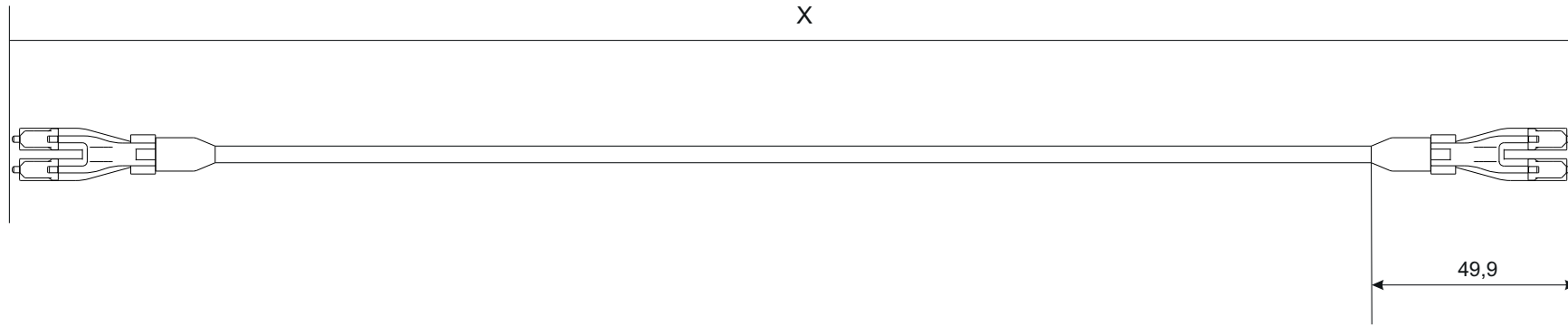
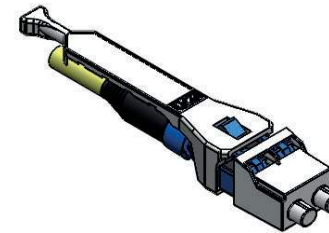


# Technical datasheet



incl. PushPull Tab (accessory) with length 51mm



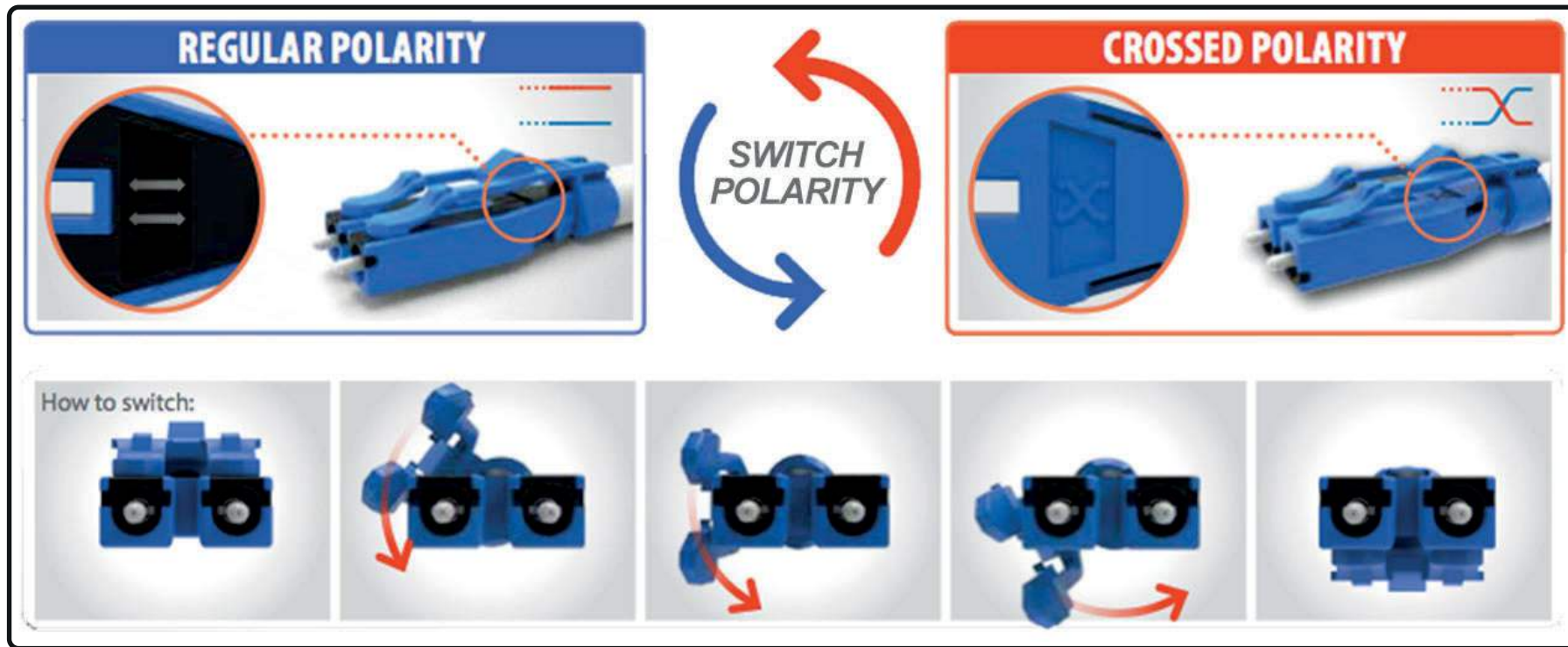
## Length tolerance


X < 5m	- 0,00 m + 0,07 m
X > 5m	- 1% + 1%

	Singlemode	Multimode
<b>Insertion Loss</b>	0,20dB typical	0,20dB typical
<b>Return Loss</b>	≥ 55 dB typical for singlemode PC	
<b>Durability</b>	IL < 0,2dB typical change 500 matings	
<b>Operating Temperature</b>	-40°C to +70°C	
<b>Ferrule Hole Size</b>	125.5µm +1/-0 Concentricity: ≤ 1µm	127µm +2/-1 Concentricity: ≤ 5µm

	drawn	12.05.2021	LP	
	appr.	12.05.2021	GF	
Titel: <b>EasyLan FO Patch Cord                  LC-D Uniboot</b>				Dimensions: mm
Drawing Number <b>ZN-FO210184</b>				Original: DIN A3
a	Neuerstellung	12.05.2021	LP	Sheet 1 of 2
Index	Revision code	Date	Name	

# Technical datasheet



a	Neuerstellung	12.05.2021	LP	drawn	12.05.2021	LP
				appr.	12.05.2021	GF
Index				Titel:		
Revision code				EasyLan FO Patch Cord LC-D Uniboot		
Date				Drawing Number		
Name				ZN-FO210184		
				 <b>EasyLan</b> ...for a better connectivity		
				Dimensions: mm		
				Original: DIN A3		
				Sheet 2 of 2		