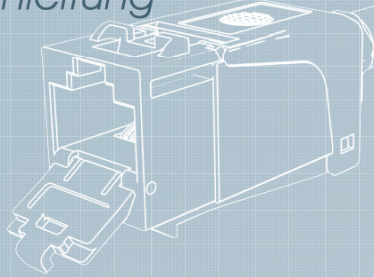
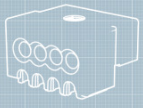


Mounting instructions

Montageanleitung

Englisch
Deutsch
908957



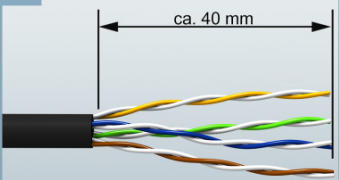
1



Strip cable to approx. 40mm.
Optional: Sheath removal tool
Part Nr.: CZABIBL1

Den Kabelmantel ca. 40mm
absetzen.
Optional: Abmantelwerkzeug
Art.Nr.: CZABIBL1

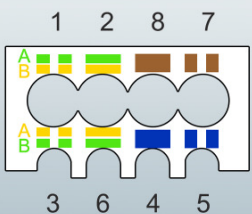
2



Remove about 40mm of the
plastic sheath and prepare wires
by untwisting pairs.

Kabelmantel auf ca. 40mm
absetzen, Aderpaare vorsortie-
ren und entdrillen.

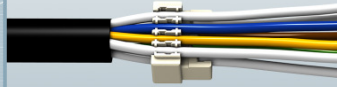
3



Wire manager with map color
code according to TIA/EIA 568
Versions A and B.

Wiremanager mit Farbcode nach
TIA/EIA 568 Version A und B.

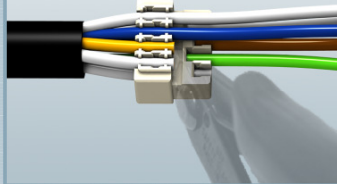
4



Insert the wires into the wire
manager according to the wire
map label.

Adern in den Wiremanager
entsprechend Farbcode ein-
führen.

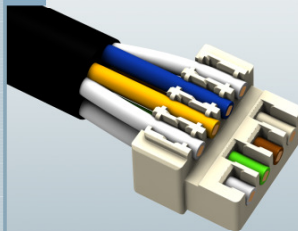
5



Trim the wires flush with the wire
manager.

Adern mit einem watenfreien
Seitenschneider bündig kürzen.

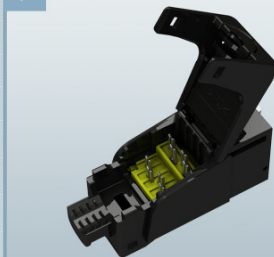
6



Assembled wires in the wire
manager.

Konfektioniertes Kabel im Wire-
manager.

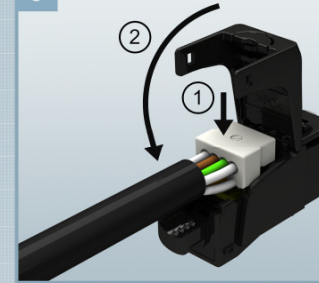
7



Open cover.

Modul öffnen.

8



1- Insert wire manager into jack
and press to fit by using a pliers.
2- Close cover.

1- Wiremanager in das Modul
einsetzen und mit Parallelver-
presszange in das Modul ein-
drücken.
2- Klappe schließen.

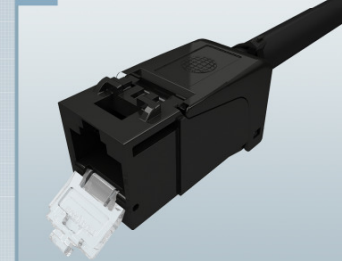
9



Fit a cable tie for strain relief and
cut off the excess length.

Kabelbinder zur Zugentlastung
anbringen und Überlänge
entsprechend abschneiden.

10



A fully assembled module.

Fertig konfektioniertes Modul.